

TEXTILES TO TRANSFORM



VALMEX® façade

HIGH-VALUE TEXTILES FOR
PERMANENT FAÇADES

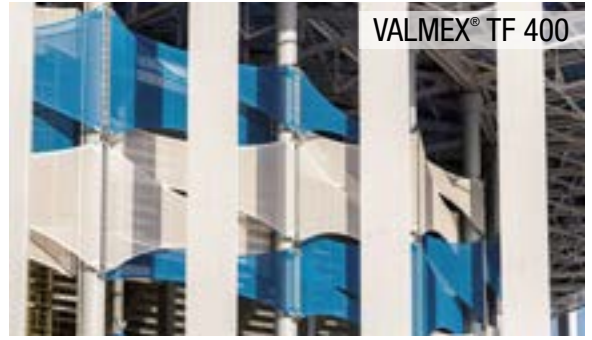
Achtung!
Aufgrund der Reproduktion ist die Farbdarstellung nicht verbindlich
und kann je nach Browser und Bildschirm vom Original abweichen.

Attention!
By reason of reproduction colour display is not binding and can
differ to original due to browser and monitor.



Building façade

Photo © by Structurflex, USA



Stadium façade



Printed building façade



Shopping center roof



Decorative façade elements



Event pavilion



The Mehler eco-care concept accompanies Mehler products throughout their entire lifecycle, including the incorporation of ecological criteria in the selection of raw materials and the use of environmentally friendly production processes.



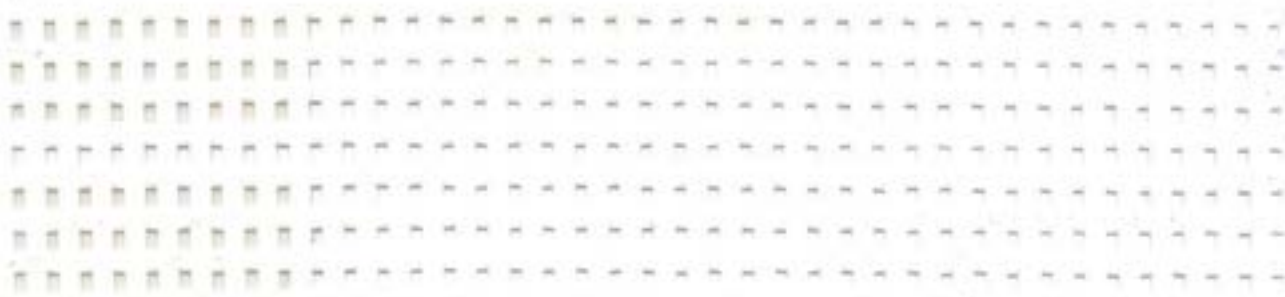
Mehler Technologies strictly selects all product components in conjunction with the most stringent EU directives and is fulfilling them as a pioneer in this industry.



Mehler Technologies honours its commitment to environmental responsibility and sustainability by participating in VinylPlus: The voluntary commitment of the PVC industry.

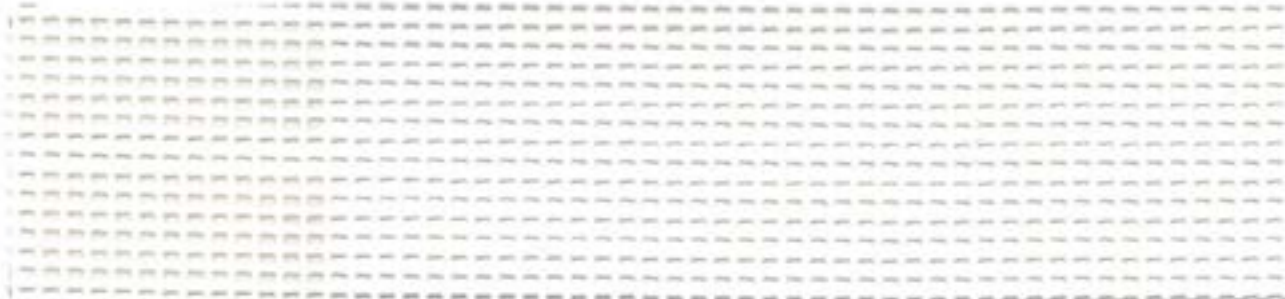


VALMEX® TF 300



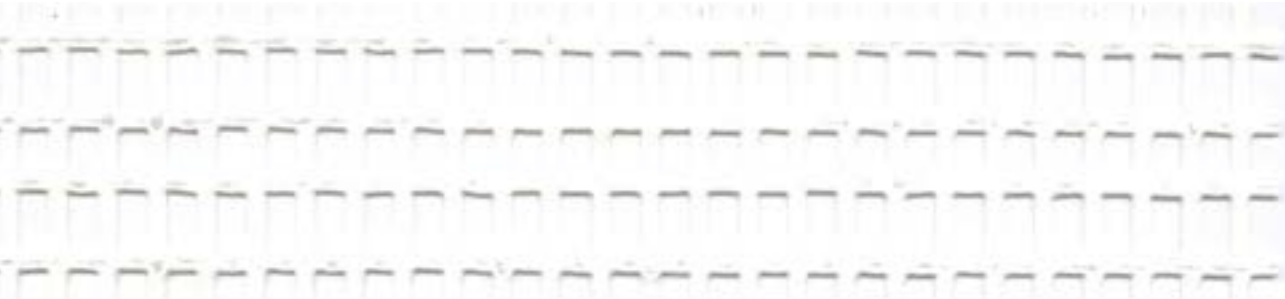
7283 5246 958958 White Order on request

VALMEX® TF 400



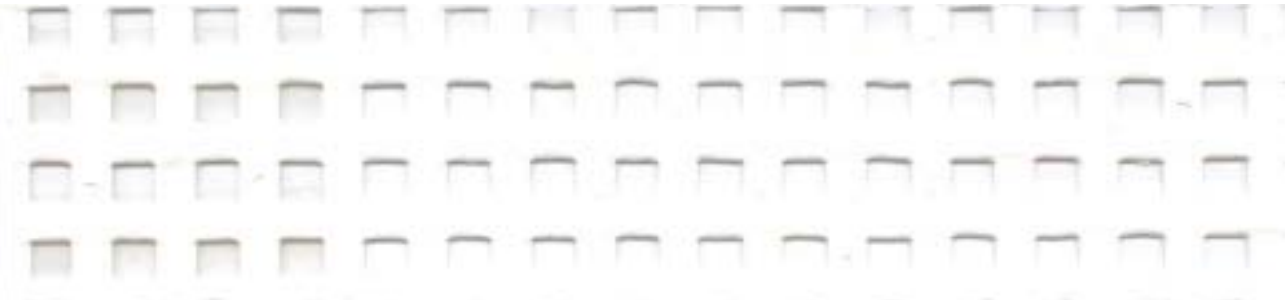
7280 5246 958958 White

VALMEX® TF 500



7285 5246 958958 White, only on request

VALMEX® TF 600



7286 5246 958958 White

The **VALMEX®** façade product range is meant for building or renewing façades. It offers numerous design options. From hard and sharp edges to smooth and sculptural curvatures.

VALMEX® façade meshes are made for long lasting cladding applications. The resistance, durability and permeability have been the key characteristics throughout the development process. The hi-tech meshes are composed of carefully selected raw materials. An extremely tight high-tenacity PES base fabric with vinyl coating,

protected by the unique and weldable **MEHATOP® F1** PVDF top finish. This results in technical perfection: the first choice for any long lasting cladding application.

Besides their different appearance the four façade meshes are mainly characterized by two values: tensile strength and degree of openness. Upon request we offer special top finishes, like **MEHATOP® N** and our special **print lacquer**. Furthermore, there is a new range of colors available.



Photo © by Structurflex, USA

VALMEX®			TF 300	TF 400	TF 500	TF 600
Product No.			7283 5246	7280 5246	7285 5246	7286 5246
Material composition						
Finish			Multi-composed lacquering with highly concentrated PVDF mixture on both sides, weldable without grinding, protected against microbial and fungal attack, UV-protected			
	Measurement methods/ Classifications	Unit				
Base fabric	DIN ISO 2076		Polyester	Polyester	Polyester	Polyester
Yarn count	DIN ISO 2060	dtex	1100	3300 / 2200	1670 / 8800	2200 / 2200
Low-wick yarn treatment	Methylenblue liquid method	mm	<5	<5	<5	<5
Total weight	EN ISO 2286-2 ASTM D-751.10	g/m ² oz./sq.yd.	700 20.7	420 12.4	500 14.7	1050 31
Fabric thickness		mm	approx. 0,95 mm	approx. 0,75 mm	approx. 1,25 mm	approx. 1,45 mm
Fabric openness	PA 12.03	%	approx. 18 %	approx. 34 %	approx. 50 %	approx. 24%
Mechanical properties						
Tensile strength I Strip Tensile (warp/weft)	DIN EN ISO 1421/V1 ASTM D-751 Procedure B	N/50 mm lbs./in.	4200 / 3000 370 / 280	4000 / 3000 370 / 280	4000 / 3200 350 / 300	6000 / 5500 680 / 680
Tear strength I Tongue Tear (warp/weft)	DIN EN 17679 ASTM D-751 (8" x 10") Specimen	N lbs.	800 / 650 150 / 120	800 / 550 160 / 140	1000 / 600 110 / 110	1800 / 1800 330 / 330
Elongation at break (warp/weft)	DIN EN ISO 1421/V1	%	approx. 23 / 23	approx. 24 / 26	approx. 22 / 32	approx. 24 / 24
Physical properties						
Adhesion	PA 09.03 (intern) ASTM D-751 RF Weld	N/cm lbs. / in.	20 11	20 11	15 8,5	20 11
Light fastness	DIN EN ISO 105 B02		>6	>6	>6	>6
Seam strength	DIN 53354 ASTM D-751 Procedure B	N/50 mm lbs. / in.	1400 160	1400 160	1000 130	4000 450
Air permeability	EN ISO 9237	l/m ² *sec	approx. 2000	approx. 6000	approx. 8000	approx. 3500
Cold resistance	DIN EN 1876-1	°C	-20	-20	-20	-20
Low Temperature	ASTM D-2136	°F	-4	-4	-4	-4
Heat resistance	PA 07.04 (intern)	°C	+70	+70	+70	+70
High Temperature		°F	+158	+158	+158	+158
Fire resistance	Classification		DIN 4102: B1 (white) NFP 92507: M2 (Coloris blanc)	DIN 4102: B1 BS 7837 EN 13501-1: B-s2-d0 NFP 92507: M1 VKF Richtlinie 5.2 California T19 NFPA 701 Test 2 ASTM E84: Class A CAN ULC S109 AS 1530 part 2 AS 1530 part 3	EN 13501-1: C-s3-d0 California T 19 NFPA 701 Test 2 ASTM E84: Class A	DIN 4102: B1 (White) BS 7837 EN 13501-1: C-s2-d0 California T 19 NFPA 701 Test 2 ASTM E84: Class A
Standard roll width		cm	320	320	320	320
Standard				✓		✓
Make to order			✓		✓	

These indicated technical data are based on average results. Due to production procedures slight deviations can occur. All technical data are in accordance with the present standard of knowledge and give product information without legal binding. All data apply to new products. All values are generated according to standards at established laboratories. Results may vary if executed at different laboratories or due to different standard interpretations. Applications suggested here do not release the customer from testing material for its intended application.

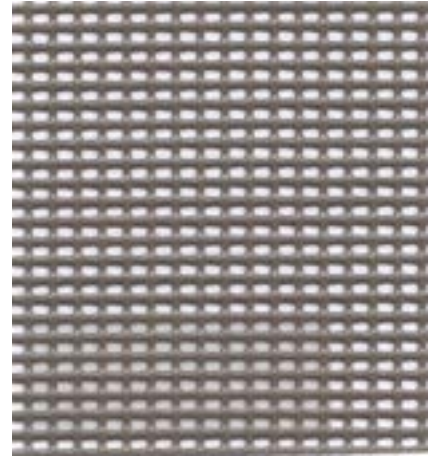
VALMEX® TF 400 Color options



7280 5246 150150 Champagner



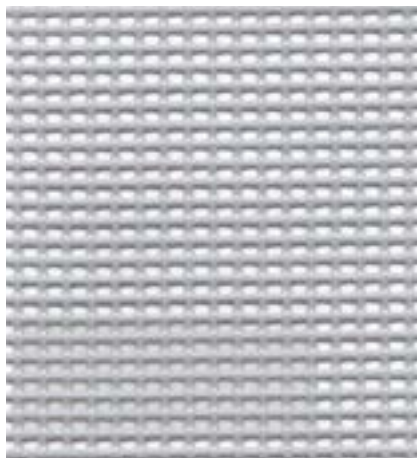
7280 5246 887887 Gobi



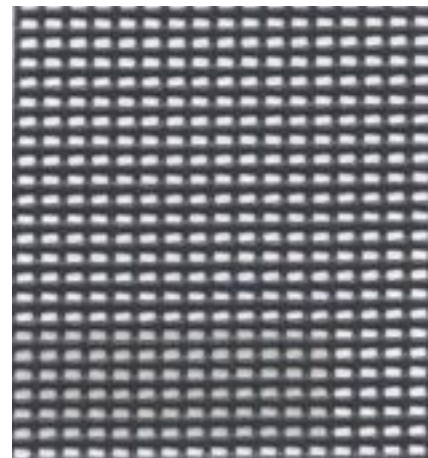
7280 5246 846846 Taupe



7280 5246 729729 Light Gray



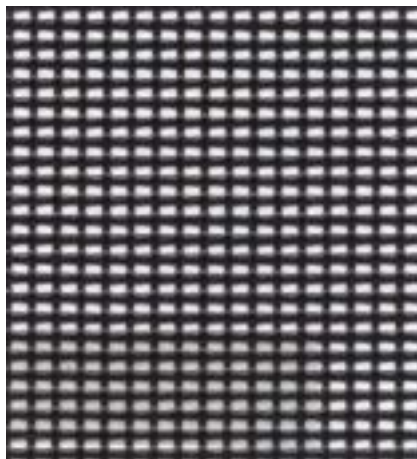
7280 5246 717717 Pale Gray



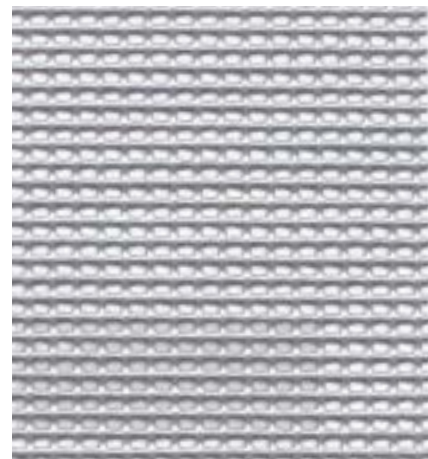
7280 5246 782782 Anthracite Gray



7280 5246 356356 Fire Red – only on request



7280 5246 905905 Black



7280 5290 911911 Silver

Bei den angegebenen technischen Daten handelt es sich um Durchschnittswerte. Geringfügige Farbschwankungen vorbehalten. RAL-Farben in Anlehnung. Stets Gültigkeit der FR-Zulassung prüfen. Alle Mehler Technologies-Produkte entsprechen der EU-Verordnung REACH (Registration, Evaluation, Authorisation of Chemicals). Die Herstellung unserer technischen Textilien ist nach ISO 9001 und ISO 50001 für Energiemanagement zertifiziert. Weitere Varianten auf Anfrage, Programmänderungen vorbehalten.

The indicated technical specifications are average values. Colours are subject to slight variations. References made to RAL are indications only. Always check the validity of fire certificate. All Mehler Technologies products are in accordance with the European REACH directive (Registration, Evaluation and Authorisation of Chemicals). Manufactured in Germany under the internationally recognized standard of quality ISO 9001 and ISO 50001 for energy management. Other versions upon request, program changes reserved.

Les données techniques indiquées sont des valeurs moyennes. Sous réserve de légers changements de coloris. Coloris approchants RAL. Veuillez toujours vérifier la validité des certificats anti-feu. Tous les produits Mehler Technologies sont conformes à la réglementation Européenne REACH – enregistrement, évaluation et autorisation des substances chimiques. Toutes nos fabrications sont certifiées selon les standards de qualité internationaux ISO 9001 et ISO 50001 pour la gestion de l'énergie. Autres versions sur demande, sous réserve de modifications de la gamme.

Características técnicas indicadas en valores medios. Sujetos a pequeñas alteraciones del color. Referencias al RAL son solo indicativas. Siempre verificar la validez del certificado de ignición. Todos los productos de Mehler Technologies cumplen la normativa REACH (Registration, Evaluation and Authorisation of Chemicals [Registro, Evaluación y Autorización de Sustancias Químicas]). La fabricación de nuestros productos está certificada según la ISO 9001 y la ISO 50001 (para la gestión energética). Otras variantes bajo consulta. Posibles modificaciones sin previo aviso.

I dati tecnici sono la risultanza di valori medi di produzione. Sono possibili leggere variazioni di colore. I colori sono prodotti in rispondenza alla scala RAL. Verificare sempre la validità delle certificazioni. Tutti i prodotti Mehler Technologies rispondono alla normativa REACH (Registration, Evaluation and Authorisation of Chemicals). La produzione dei nostri tessuti è certificata secondo ISO 9001 e ISO 50001 per la gestione della prestazione energetica. Su richiesta, si possono produrre altre versioni. Modifiche della gamma sempre possibili.

Все указанные технические данные базируются на основе выявленных средних показателей. Цвета приближены к RAL. Незначительные цветовые отклонения возможны. Все продукты Mehler Technologies соответствуют ЕС директиве «REACH» – (Registration, Evaluation and Authorisation of Chemicals). Проверьте срок действия сертификата пожарной безопасности. Произведено и сертифицировано в Германии согласно нормативам стандартов качества ISO 9001 и ISO 50001 для управления энергопотреблением. Другие варианты по запросу. Возможны изменения в программе.



Sales companies and Sales offices

France / Mehler Technologies France
3 chemin des Cytises, Bât. A1
F-69340 Francheville
info-fr@mehler-textнологies.com

U.K. / Mehler Technologies Ltd.
Hollinwood Business Centre
Albert Street, Oldham,
Lancs. OL8 3QL
info-uk@mehler-textнологies.com

Italy / Mehler Technologies S.r.l.
Via Enrico Fermi 52/A
I-20019 Settimo Milanese MI
info-it@mehler-textнологies.com

Poland / Mehler Technologies Sp. z o.o.
ul. Mikołajczyka 31a
PL-41-200 Sosnowiec
info-pl@mehler-textнологies.com

Latvia / SIA „Low & Bonar Latvia“
Krustpils iela 54 E
Rīga, LV-1057
info-lv@mehler-textнологies.com

Romania / Mehler Technologies Romania S.R.L.
Str. Linia de Centura Nr.2, D2
RO-077175 Stefanestii de Jos
(Judetul Ilfov)
info-ro@mehler-textнологies.com

Turkey / Mehler Technologies Ltd. Şti.
Başakşehir San. Sit. A Blok No: 22,
Başakşehir, 34490 İstanbul, Turkey
info-tr@mehler-textнологies.com

U.S.A / Mehler Technologies Inc.
220 B Cabell Street
Martinsville, VA 24112
info-usa@mehler-textнологies.com

United Arab Emirates / Mehler Technologies Middle East Trading LLC
Liberty Building, Office #103
Al Garhoud – Dubai, U.A.E.
info-uae@mehler-textнологies.com

India / Low & Bonar India Pvt. Ltd.
924, 9th Floor, Wave Silver Tower, Sector 18,
Noida 201 301, UP, India
info-in@mehler-textнологies.com

Malaysia / Mehler Technologies South East Asia Rep office
Co-Labs
Level 4, The Starling Mall
No. 6, Jln SS 21/37, Damansara Utama
47400 Petaling Jaya
Selangor, Malaysia
info-mys@mehler-textнологies.com

Russia / OOO «Mehler Technologies»
Sadovnicheskaya embankment 79
115035 Moscow
info-ru@mehler-textнологies.com

Australia / Mehler Technologies Office
PO BOX 339, Waterford West,
Queensland 4133, Australia
info-aus@mehler-textнологies.com

China / Mehler Technologies Office
No.9 Xingtang West Road
Chunjiang Zhen, New District
213034, Changzhou, China
info-chn@mehler-textнологies.com

Manufacturing and sales

Mehler Technologies GmbH
Rheinstrasse 11
D-41836 Hückelhoven
info-de@mehler-textнологies.com

Mehler Technologies GmbH
Edelzeller Strasse 44
D-36043 Fulda
info-de@mehler-textнологies.com

Mehler Technologies s.r.o.
Šlechtova 860
CZ-512 51 Lomnice nad Popelkou
info-cz@mehler-textнологies.com

V058/1000/2022-11