

Frontside
381
Précontraint®

Tenseo Frontside 381

Solar protection and perfect outward visibility

A unique solution to assert or transform a building's personality

Unlimited creativity

- Pearly or metallic colors
- Material flexibility to bring facades to life and enhance on lighting effects
- Graphic customization (digital or serigraphic printing on front face)

Thermal and visual comfort

- Thermal control of buildings: blocks up to 85% of solar heat

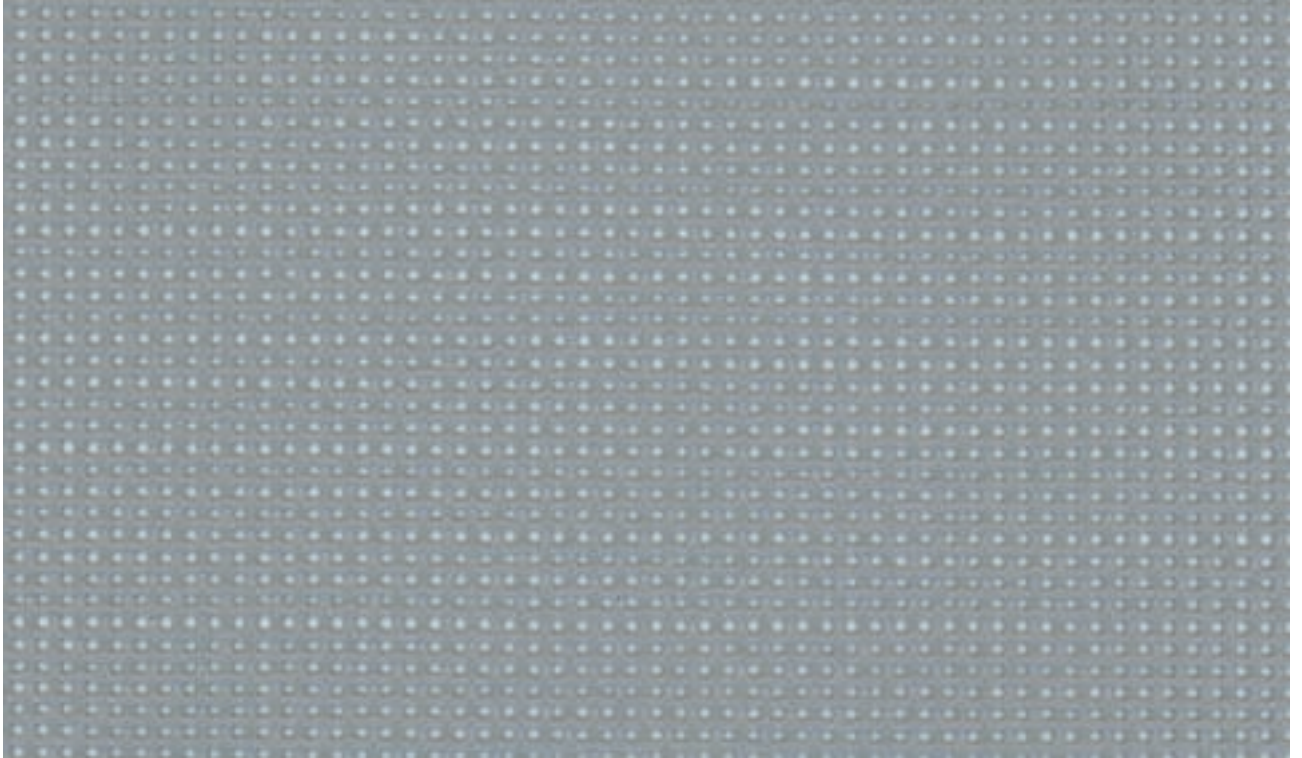
Reduction of environmental impacts

- Light bioclimatic facade
- Low carbon footprint



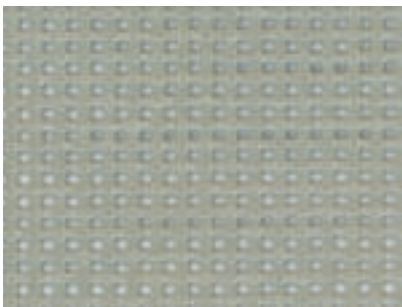
**An innovative facade
solution combining
creativity and
performance**

Tenseo Frontside 381



Interferential grey

381-3121



Ash blond

381-3109



Sandy beige

381-3123



Silver metallic

381-3128



Beaten metal

381-3125



Black cherry

381-3120



Print White*

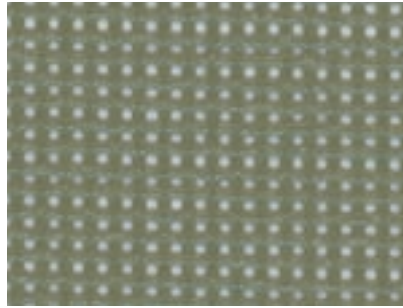
381-50708

* To be printed on the back side with Sign Mat special print varnish



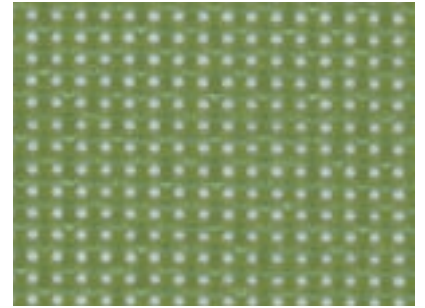
Milky green

381-3119



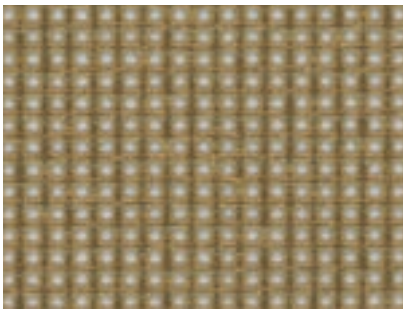
Cactus green

381-3118



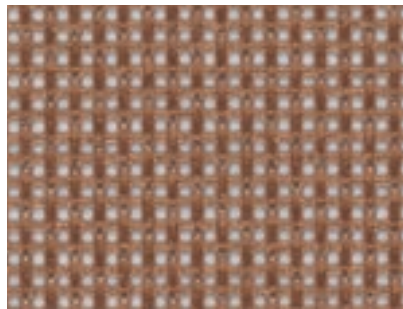
Spring green

381-3117



Temperament golden

381-3124



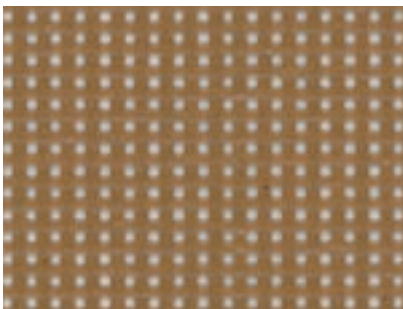
Cinnamon copper

381-3127



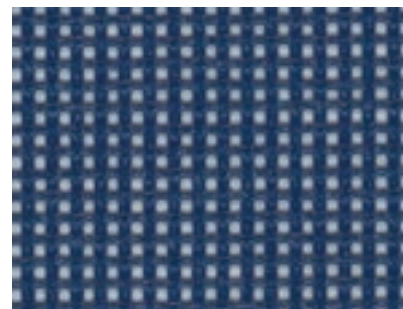
Glowing red

381-3105



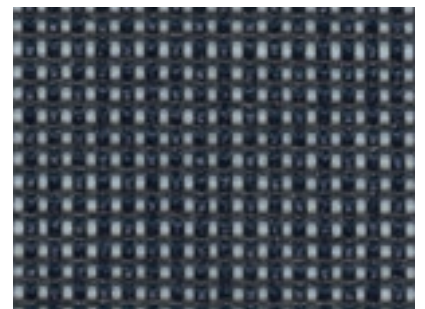
Pumpkin

381-3101



Midnight blue

381-3111



Slate















381-3113



Choco

381-3108

Solar and light properties (based on EN 14501)

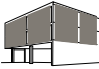

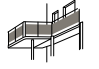

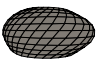
	Width 267 cm 105.1 in	TS	RS	AS	TV n-h	g_{ext}^e	
381-3101		•	30	27	43	28	0.17
381-3105		•	29	19	52	29	0.17
381-3108		•	27	10	63	27	0.17
381-3109		•	28	37	35	28	0.15
381-3111		•	28	21	51	27	0.16
381-3113		•	27	9	64	27	0.17
381-3117		•	27	26	47	27	0.16
381-3118		•	28	30	42	28	0.16
381-3119		•	30	41	29	29	0.15
381-3120		•	28	6	66	28	0.18
381-3121		•	28	31	41	28	0.16
381-3123		•	29	34	37	28	0.16
381-3124		•	28	28	44	27	0.16
381-3125		•	27	20	53	28	0.16
381-3127		•	27	29	44	28	0.15
381-3128		•	28	40	32	27	0.15
381-50708		•	32	56	12	31	0.15

TS	Solar Transmission in %
RS	Solar Reflection in %
AS	Solar Absorption in %
TS + RS + AS	=100% of the incident energy
TV n-h	Normal-hemispherical visible light transmission (%)
g_{ext}^e	External Solar Factor

g_{ext}^e according to: ISO 52022-1 simplified method

Simplified calculation method of the solar factor g_{ext} for solar protection device combined with glazing.
Type "D" glazing: insulating double glazing with low emissivity on face 2 (4+16+4; Argon filling) $g=0.32$ - $U=1.1$

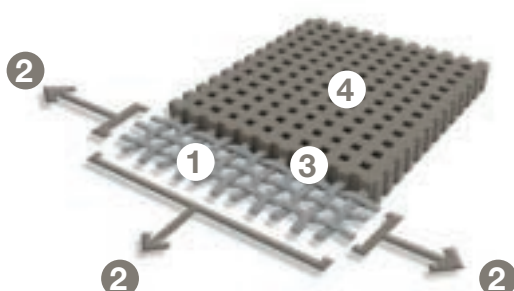
Main applications

	Facade covering	✓
	Fixed sun breakers	✓
	Claddings for balconies	✓
	Claddings of technical units	✓
	Freeform facade	✓



Exclusive Précontraint® technology

This unique, world-patented technology involves maintaining the composite in bi-axial tension throughout the manufacturing cycle. It ensures our materials' exceptional performance characteristics, which ensure they exceed market standards in terms of long-term stability, strength, coating thickness and flatness.



1	High-tenacity polyester micro-yarn reinforcing mesh	Higher resistance to elongation and tearing
2	Coating under bi-axial, warp and weft tension	No deformation during installation and usage
3	Coating thickness covering top of yarns and dirt repellent surface treatment	Enhanced aesthetic and structural durability
4	Extremely flat and thin	Easy-to-clean smooth surface ensuring compactness and easy rolling

Tenseo Frontside 381

Mechanical properties

Tensile strength (warp/weft) EN ISO 1421	330/330 daN/5 cm • 742/742 lbs/2 in
Tear strength (warp/weft) DIN 53.363	80/90 daN • 180/202 lbs
Adhesion EN ISO 2411	9 daN/5 cm • 20 lbs/2 in

Fire resistance

Rating - International fire certificate available, such as*	NFPA 701 Method 1 NFPA 701 Method 2 Class A /ASTM E84 CSFM T19 AS/NZS 1530.3 Group 1 /AS/NZS 3837 G1 /GOST 30244-94 B1 /DIN 4102-1 B-s2,d0 /EN 13501-1
---	--

Dimensions

Weight EN ISO 2286-2	550 g/m ² • 16.2 oz/sq. yd
Thickness EN ISO 5084	0.95 mm • 950 microns
Width	267 cm • 105.1 in
Roll length	50 lm • 54.68 yd

Complementary information

Front face	Metallic or pearl finish
Back face	Matt
Yarn	1100 Dtex PES HT
Porosity	28%

Management system

Quality: ISO 9001 • **Environment:** ISO 14001 • **Energy:** ISO 50001

Certifications, labels, warranty



10-year warranty



* Contact us for latest certificate updates & validities

¹ Summarizes the group's CSR project focused on human, to align economic performance and positive impact.

Mechanical properties are average values with a +/-5% tolerance, variance of +/-10% for weight given.

The purchaser of our products is responsible for their application or transformation in relation to possible third party rights. The purchaser of our products is responsible for their installation in compliance with the standards, working practices and safety regulations of their destination country. Please refer to our warranty document with regard to contractual liability.

Values quoted in this document are commonly used test results for design purposes. They are given for information only in order to offer our customers optimum usage of our products. Our products are subject to improvements resulting from technical developments and we reserve the right to modify their characteristics at any time. The purchaser of our products is responsible for checking the above data.

The colors and textures presented are included for information only.